

Getting started (Quick Start Manual)

Web module installation and system registration

1. Communication connections and power supply

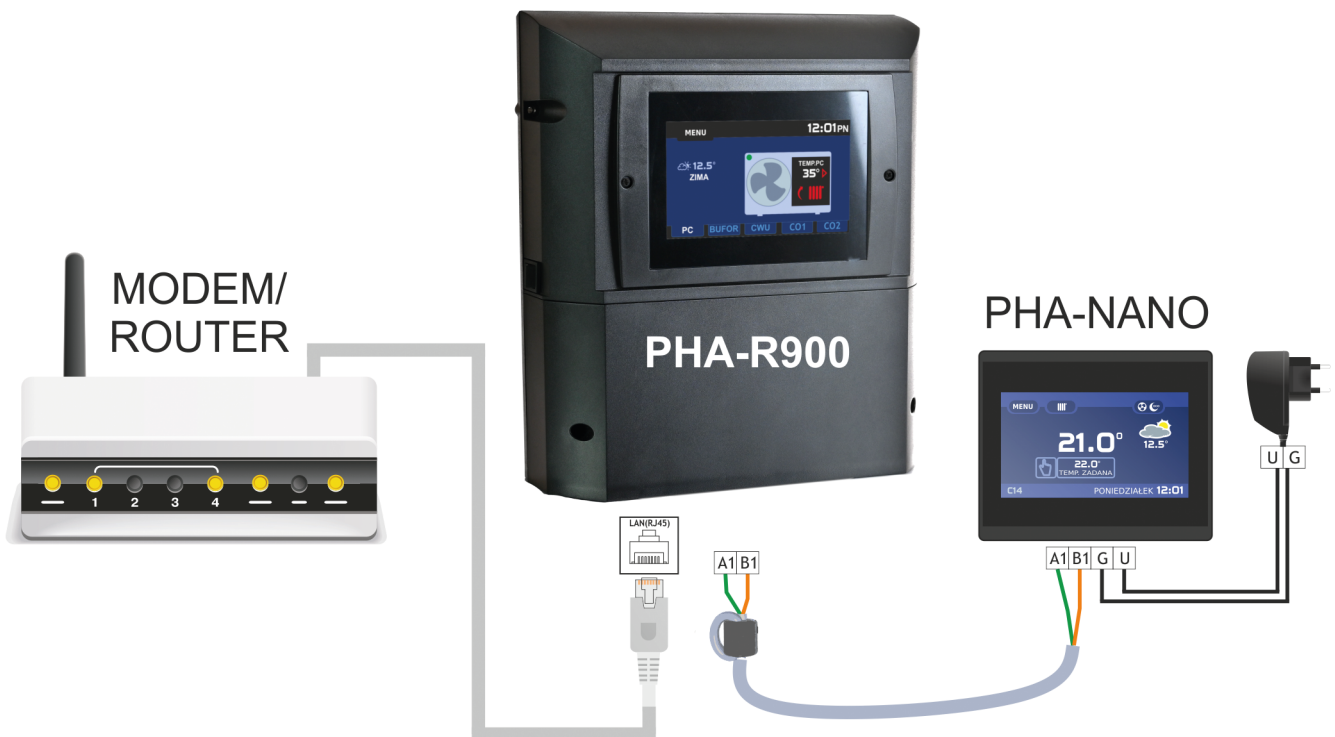
Communication connections and power supply
The C14 protocol is used for inter-controller communications. To allow for inter-device communications, lines A and B lines must be connected in parallel to the next controller. To make the connection, use a twisted-pair cable with a cross-section between 0.14 and 0.5 mm² and a maximum length of 200 m.

After that, connect the module to your internet network device (e.g. a router) using the ETHERNET cable with a RJ45 terminator as supplied with the kit.

See the figure below for an example of a connection layout.

If your device is connected correctly, the following front status LEDs will light up once the power is switched on:

- a flashing green DHCP LED (indicating that a network connection is established)
- a flashing green C14 LED (indicating C14 protocol-based communications with the controller)
- a flashing green Server LED (indicating communications with the iNext server)
- a flashing red PWR LED (indicating that the device is connected correctly and is currently in operation).



To ensure smooth data transmission, a ferrite filter needs to be placed on the power and communication cables of the internet module, as shown in the figure above.

When running the wires through the filter, loop them around the ring.

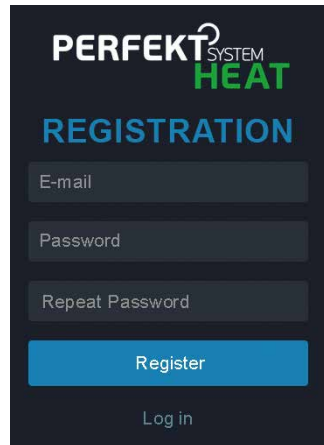
NOTICE: If the power and communication cables are not connected correctly, the internet module and the controller may suffer permanent damage. Before switching on the device's power supply, make sure that all cables are connected as specified in the controller's operating manual.



2. Registering an account

To register your online account, please fill in all of the fields at <https://pompyciepla.perfexim.pl/register>, as shown below.

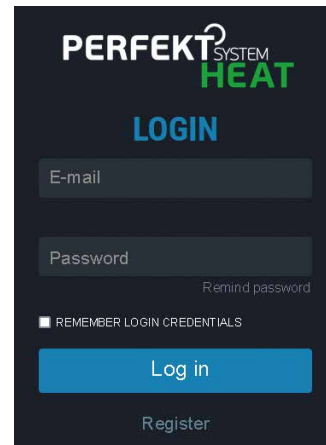
Your password should have at least 8 characters. For added password security, upper and lower case letters, numbers and special characters are recommended.



The registration form features the 'PERFEKT SYSTEM HEAT' logo at the top. Below the logo, the word 'REGISTRATION' is displayed in blue. The form contains three input fields: 'E-mail', 'Password', and 'Repeat Password'. A blue 'Register' button is positioned below the fields, and a 'Log in' link is located at the bottom of the form.

3. Logging in to the iNext system

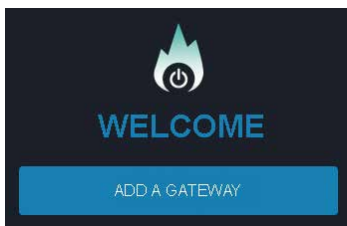
To log in to the iNext system, please visit <https://pompyciepla.perfexim.pl>



The login form features the 'PERFEKT SYSTEM HEAT' logo at the top. Below the logo, the word 'LOGIN' is displayed in blue. The form contains two input fields: 'E-mail' and 'Password'. A 'Remind password' link is located below the password field. A checkbox labeled 'REMEMBER LOGIN CREDENTIALS' is present below the input fields. A blue 'Log in' button is positioned below the fields, and a 'Register' link is located at the bottom of the form.

4. Adding a new gateway

Once you have registered in the system, a welcome screen will appear where you can add a new system gateway right away. To add a device, click ADD A GATEWAY

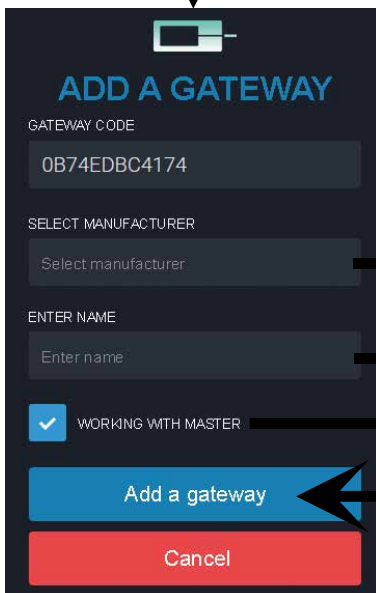


You will find the code in your warranty card and on your PHA-R900 housing cover.

NOTICE: Please enter your gateway code using only uppercase characters.

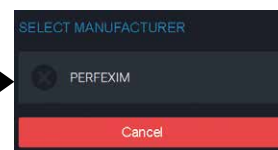
MAC 0A:07:DS:02:22:3D
KOD 2FGEB91A0665
PROD. 2019-01

Once your gateway code is correctly entered, you will see the manufacturer checkbox and a field to enter the name for your added gateway and all of the devices it is connected to.



The 'ADD A GATEWAY' form includes a gateway code input field with the value '0B74EDBC4174'. Below this is a 'SELECT MANUFACTURER' dropdown menu with 'PERFEXIM' selected. There is an 'ENTER NAME' input field. A checkbox labeled 'WORKING WITH MASTER' is checked. At the bottom, there are two buttons: 'Add a gateway' (blue) and 'Cancel' (red).

Please select your controller's manufacturer from the list. On generating and proving a service code, a service technician will be able to connect to the gateway remotely, if needed.



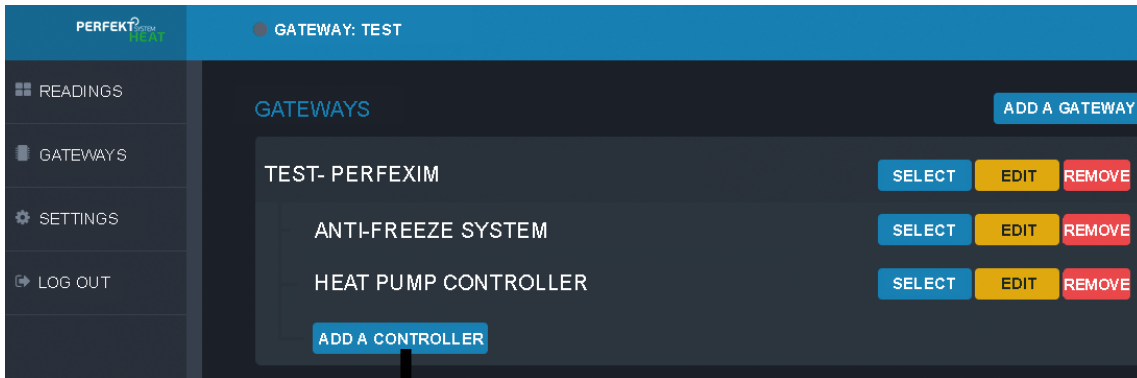
For easy gateway identification, please add a description in the name field.

Please check this option only where one of the devices your gateway interoperates with manages inter-device communications. The managing device will have the "MASTER" box checked in the settings in the C14 network mode.

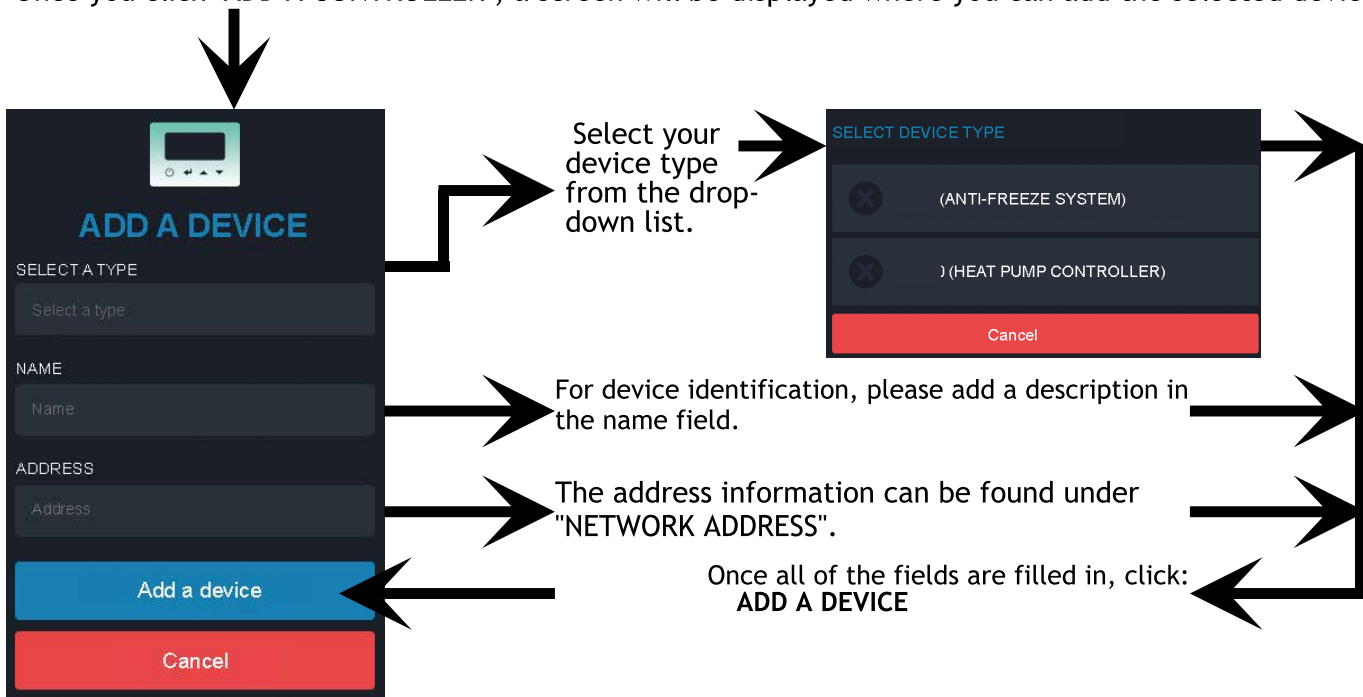
Once all of the fields are filled in, please click: **ADD A GATEWAY.**

5. Adding a new device

The system allows multiple controllers to be connected simultaneously to a single internet module. You need to configure each controller separately.



Once you click "ADD A CONTROLLER", a screen will be displayed where you can add the selected device.



Device addresses (examples)

Adress	Device	Type of device
22	PHA-SAZ/2	Anti-freeze system
94	PHA-R900	Heat pump controller
41 - 55	PHA-Nano no 1 - 15	Thermostat/room panel